

A smart biomonitoring technology

Aquapro™ provides a first-line quick alert of the presence of a wide spectrum of toxic contaminants, both organic and inorganic, in the water so that immediate responsive action can be taken before the situation becomes critical, saving time, and downstream costs. Water quality can be monitored continuously 24/7, in real-time with remote monitoring capabilities.

To date, Aquapro™ systems have been deployed with water utilities in Singapore, Greater China (China and Taiwan), USA, Australia and the Middle East.



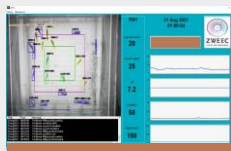
Water Quality Monitoring in High Turbidity

ZWEEC's proprietary biomonitoring technology has been known for water quality monitoring of treated water over the past decade.

The newly upgraded system, Aquapro™ is now also able to operate directly in high turbid water (up to 250 NTU) with Artificial Intelligence (AI) and visualization enhancement, enabling effective and accurate water quality monitoring of untreated (raw) and treated water environment.

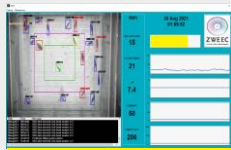
Tiered Alert System, Including the Early Warning

Aquapro™ is able to monitor 20 fish in motion at high accuracy. When there are abnormalities in fish behaviour and water quality is detected, the system automatically triggers various alerts and sends them to the end-users.



Brown Alert – Early Warning

Fish behavioural changes are observed. Water is suspected to be contaminated.



Yellow Alert

Water quality has been compromised. Needs to be closely monitored.



Red Alert – Critical Alert

Water quality has reached critical stage. Urgent corrective action required.



Low Maintenance

Aquapro™ is equipped with an Automatic Flushing feature. It prevents the accumulation of sediments that could, over time, affect the system visualization. At the same time, enable less frequency of service maintenance.

Technical Specifications

Electrical Rating	<ul style="list-style-type: none">• 220-240VAC, 500W max
Ambient Environment	<ul style="list-style-type: none">• Ambient temperature: 0-45°C• Relative humidity: <90% (non-condensing)
Preferred Condition	<ul style="list-style-type: none">• Indoor/sheltered
Enclosure	<ul style="list-style-type: none">• Stainless steel designed with IP55 features
Footprint	<ul style="list-style-type: none">• Less than 0.7 m² (excluding optional features)
Weight	<ul style="list-style-type: none">• Less than 65kg (excluding optional features)
Water Flow	<ul style="list-style-type: none">• 2 litre/minute
Fish Type	<ul style="list-style-type: none">• Tiger Barb (2 to 5cm)
Display	<ul style="list-style-type: none">• 15" LCD Display
Peripheral Control	<ul style="list-style-type: none">• 7" True TFT touch screen panel
Peripheral (included)	<ul style="list-style-type: none">• Auto Feeder• Auto Sampler
Optional Features	<ul style="list-style-type: none">• Auto Leveler• Dechlorination Unit• Heater Unit• Water Parameter Sensors• UPS
Alerts Notification/ Alarm Monitoring	<ul style="list-style-type: none">• Tiered audio-visual alert indicator• Alarm signal (Dry contacts)• Email, SMS (telecom services and data not included)
Communications	<ul style="list-style-type: none">• Wireless 802.11b/g or Wired (RJ45)



Building the Next Evolution in Water Technology

ZWEEC is a leading Singapore-based technology company focused on building innovative and secure water technology solutions. Adopting an integrated and data-driven approach, our solutions leverage on advance analytics, artificial intelligence and predictive modelling to power IoT solutions that drive early intervention opportunities. Our award-winning water technology solutions, available as on-premises implementation and as secure cloud solutions, are trusted by water industry leaders from Singapore, Australia, China, Taiwan, the US, and the Middle East.

www.zweec.com

Headquarters

512 Chai Chee Lane #05-07,
Singapore 469028

☎ +65 6776 6711

✉ enquiries@zweec.com

R&D Centre

PUB Singapore Water
Exchange, 84 Toh Guan Road
East #03-05, Singapore 608501