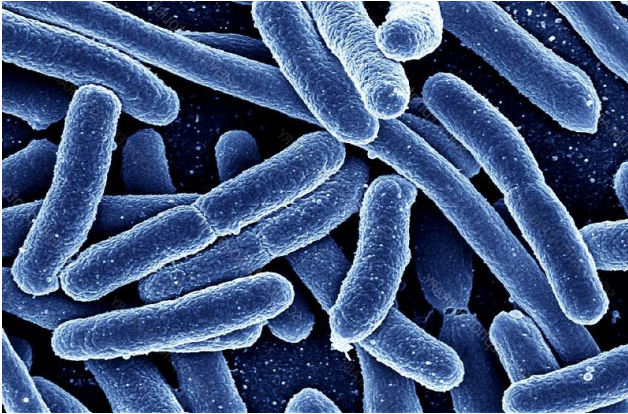


## *A rapid portable microbial sensor technology*

Bacpro™ is an innovative automatic portable microbial sensor that prevents the occurrence of waterborne outbreaks and ensure that water is safe for the community. Packed in a portable suitcase, it can be easily deployed for onsite testing, and can be integrated into IoT networks, enabling applications for smart water, smart city, and smart home.

With Bacpro™, we can save time, save money, and save lives.



## Rapid Waterborne Bacteria Detection

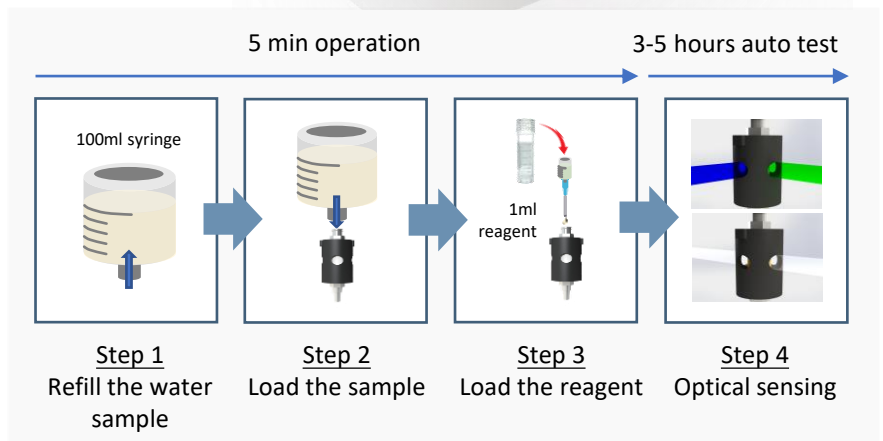
ZWEEC's proprietary innovative portable technology enables rapid waterborne bacteria detection onsite with quick and easy field tests that automatically detects specific bacteria species with high sensitivity, achieving the gold standard in a much shorter time at affordable prices not only for regulators but also for industrial end-users.

## Quick and Easy Field Tests of Bacteria

- ✓ New test reagent with 2 fold higher sensitivity
- ✓ New test protocol for large volume sample (>1 litre)
- ✓ LOD of 1 CFU within 6 hours, achieving WHO's guidelines for drinking water quality
- ✓ Automated protocol with multiple samples detection and cloud communication



## Operation Procedure



## Technical Specifications

Method	<ul style="list-style-type: none"><li>• Enzyme substrate</li></ul>
Operating Environment	<ul style="list-style-type: none"><li>• Indoor and outdoor</li><li>• Temperature: -10 to 45 °C</li><li>• Humidity: up to 90%</li></ul>
Test in Parallel	<ul style="list-style-type: none"><li>• 4 samples</li></ul>
Consumables	<ul style="list-style-type: none"><li>• Microfluidic cartridge</li><li>• Reagent</li></ul>
Time to Results	<ul style="list-style-type: none"><li>• 3 - 6 hours</li></ul>
Size	<ul style="list-style-type: none"><li>• 300 x 250 x 150 mm</li></ul>
Weight	<ul style="list-style-type: none"><li>• 10 Kg</li></ul>
Power	<ul style="list-style-type: none"><li>• ~20 W</li></ul>
Application Scenarios	<ul style="list-style-type: none"><li>• Treated/surface/underground water test</li><li>• Civil water test</li><li>• Community water test</li><li>• Rural water test</li></ul>



### Building the Next Evolution in Water Technology

ZWECC is a leading Singapore-based technology company focused on building innovative and secure water technology solutions. Adopting an integrated and data-driven approach, our solutions leverage on advance analytics, artificial intelligence and predictive modelling to power IoT solutions that drive early intervention opportunities. Our award-winning water technology solutions, available as on-premises implementation and as secure cloud solutions, are trusted by water industry leaders from Singapore, Australia, China, Taiwan, the US, and the Middle East.

[www.zwecc.com](http://www.zwecc.com)

#### Headquarters

512 Chai Chee Lane #05-07,  
Singapore 469028

☎ +65 6776 6711

✉ [enquiries@zwecc.com](mailto:enquiries@zwecc.com)

#### R&D Centre

PUB Singapore Water  
Exchange, 84 Toh Guan Road  
East #03-05, Singapore 608501